

FOR LEASE > OFFICE SPACE



Palm Valley Office Park III

1626 N. LITCHFIELD RD. GOODYEAR, AZ 85395

**PRIME GROUND FLOOR
LOBBY EXPOSURE**



Palm Valley Office Park III > For Lease

Suite 110: ±6,357 RSF

Lease Rate: \$26.00/SF

Suite 260: ±2,342 RSF

Parking Ratio: 4.30/1,000 SF

Suite 280: ±1,421 SF

Property Features

- > Situated at the gateway to the Palm Valley master-planned community
- > Restaurants, retail, banks and theaters in the immediate area
- > One minute from I-10
- > Twenty minutes from downtown Phoenix



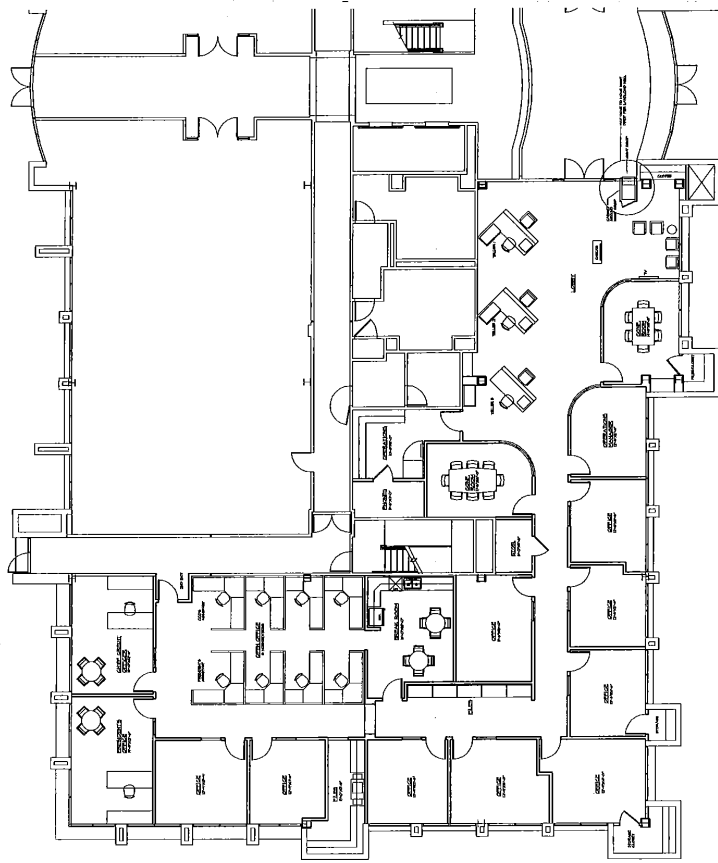
Managed by:



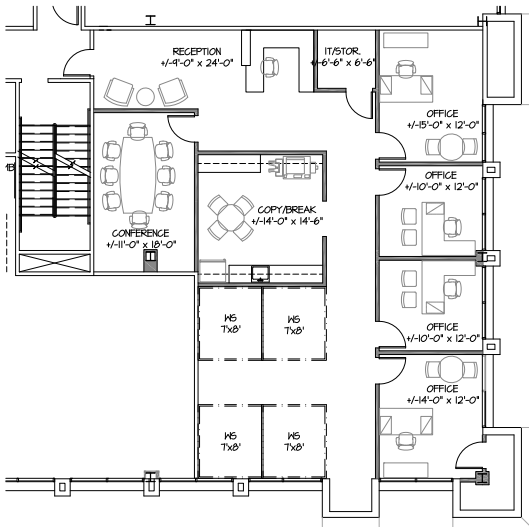
TYLER SMITH
602 222 5095
PHOENIX, AZ
tyler.smith@colliers.com

COLLIERS INTERNATIONAL
2390 E. Camelback Rd, Suite 100
Phoenix, AZ 85016
www.colliers.com/greaterphoenix

Palm Valley Office Park III > Floor Plan

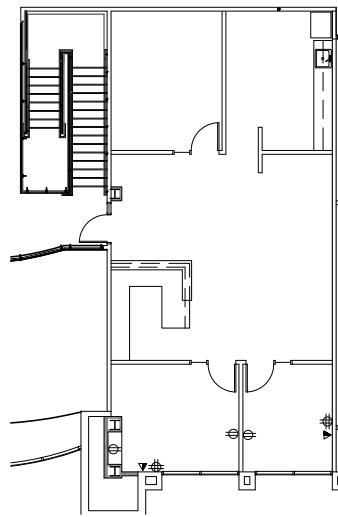


SUITE 110: ±6,357 RSF

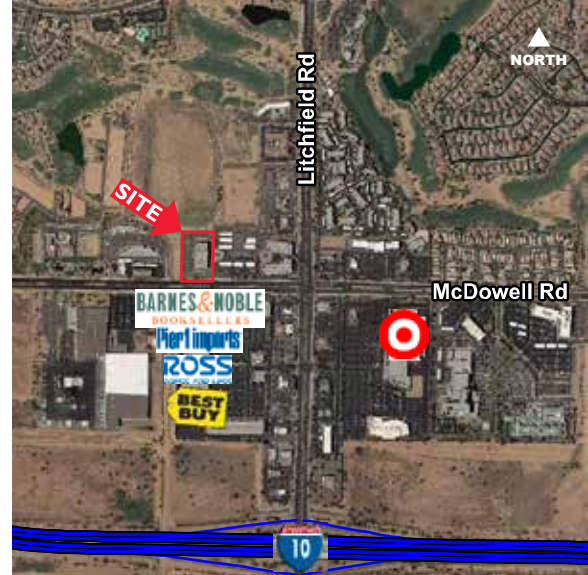


SUITE 260: ±2,342 RSF (SHELL CONDITION)

*Hypothetical layout shown



SUITE 280: ±1,421 SF



Contact Us

TYLER SMITH
 602 222 5095
 PHOENIX, AZ
tyler.smith@colliers.com

COLLIERS INTERNATIONAL
 2390 E. Camelback Rd, Suite 100
 Phoenix, AZ 85016

www.colliers.com/greaterphoenix

